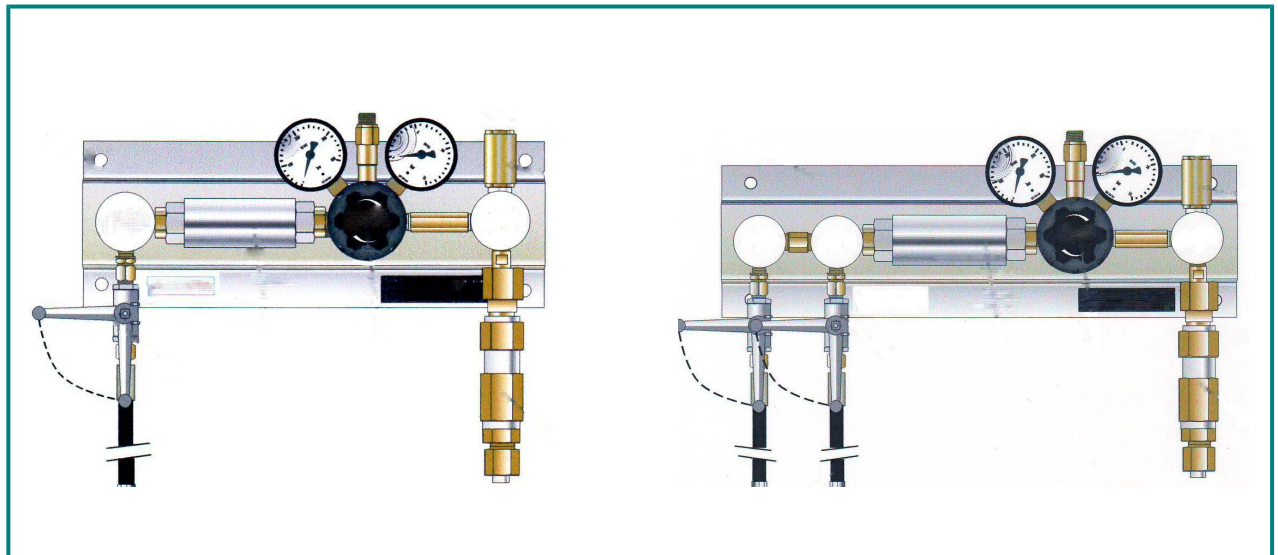


Cylinder station HP 274 Acetylene 2.6

1x1 cylinder or 1x2 cylinder one sided



Description:

The HP 274 is a single stage cylinder station for Acetylene 2.6.

The supply panel serves the secure supply of Acetylene from 1 or 2 cylinders and is available for 1x1 cylinder or 1x2 cylinders as standard.

The station is mounted on a console and has a pressure regulator with in and outlet gauges as standard. Also a safety valve, flashback arrestor und quick-connectors.

Can be retrofitted with contact gauges.

In addition, as accessories, a gas failure detector and an emergency shut-off system for upgrading the safety of the system are also available (see. segment 7).

Application area:

Especially for gases with high requirements on security and leak-tightness.

Utilisation in Labs and AAS-supply.

Technical details:

Material:	brass
Purity:	≤ 2.6
Max. Inlet pressure:	25 bar
Outlet pressure range:	0,1 – 1,5 bar
Operating temp.:	-20°C to +70°C
Dimensions:	(1x1) 405x200x300 (1x2) 470x200x300
Weight:	approx. 7kg (1x1)
Flow:	approx. 0,5m ³ /h (momentary 1m ³ /h)
Connections:	
Inlet:	to DIN 477-3 (others on request)
Outlet:	NPT ¼ f

Type approval:

for hoses	BAM 0283
for ball valve DN 6	BAM 0394
for quick shut-off device. HDS17	BAM 1481
for pressure regulator	BAM cert.
for flash back arrestor	BAM 0485

Hornung Quality standard

The company Hornung is certified to

DIN EN ISO 9001 and ISO 14001:2009.

All single parts are manufactured, assembled and tested by in-house production.

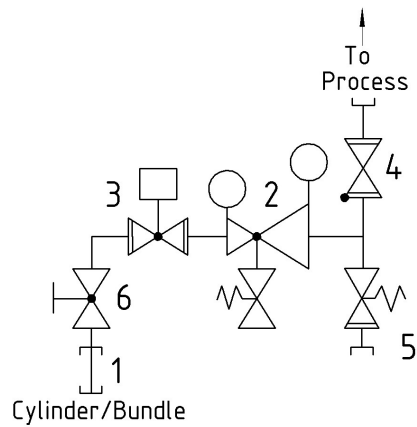
The finished parts are therefore under all criteria of German quality control with 100% final inspection.

Hornung GmbH
Rathenaustraße 55, 63263 Neu-Isenburg

Phone: +49 6102 7883-70
Fax: +49 6102 7883-40

www.hornung.org
info@hornung.org

Flow diagram:



Accessories:

See total catalogue segment

7. Gauges, compression fittings, cylinder holders and accessories. Gas cylinder cabinets und safety equipment.

Scope of supply:

- High pressure hose 90°, approx. 800mm long (1)
- Pressure regulator with in and outlet gauges (2)
- quick shut-off device (3)
- flash back arrestor (4)
- Safety valve (5)
- Shut off ball valve (6)

Without compression fittings at outlet.

Ordering information:

Number of cylinders:

- 1 = 1x1 cylinder
2 = 1x2 cylinders

Gauges:

- 1 = standard gauge
2 = contact gauge Ex

Order example:

HP274-	1	1	Acetylen
Typ	No. Cyl.	gauge	Gas type